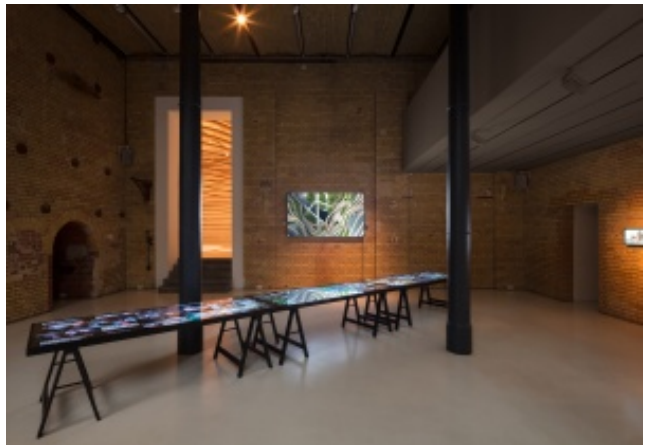


26.10.2017

Exhibition „Green Heart – Architecture for Tropical Cities“ inaugurated



Date

26.10.2017

Links

**
Further information:
Aedes Architecture Forum**

**
Project:
Marina One, Singapore**

**
Photos:
 © HGEsch Photography**

**
The catalogue for the exhibition:
„Green Heart – Architecture for Tropical Cities“
ISBN 978-3-943615**

The "Green Heart—Architecture for Tropical Cities" exhibition showcases the Marina One project by ingenhoven architects, which will open in the center of Singapore at the end of 2017. As an international role model for living and working, Marina One makes an innovative contribution to the discourse on mega-cities, especially in tropical regions, which, in the context of increasing population and climate change, face enormous challenges. The high-density building complex with its mix of uses extends to over 400,000 square meters and, with its group of four high-rise buildings, defines the "Green Heart"—a public space extending over several stories. This three-dimensional green oasis reflects the diversity of tropical flora. Aedes presents diagrams and interviews with project participants, as well as a documentary film on the architecture. The central element of the exhibition is a spectacular five meter high space sculpture which brings to life the unique shape of the Marina One buildings.

Exhibition Period:

October 28–November 30, 2017

Opening evening:

Friday, October 27, 2017, 6.30 pm

Exhibition venue:

Aedes Architecture Forum, Christinenstr. 18–19, 10119 Berlin

Opening times:

Tuesday–Friday 11:00 am–6:30 pm, Sunday–Monday 1:00 pm–5:00 pm

